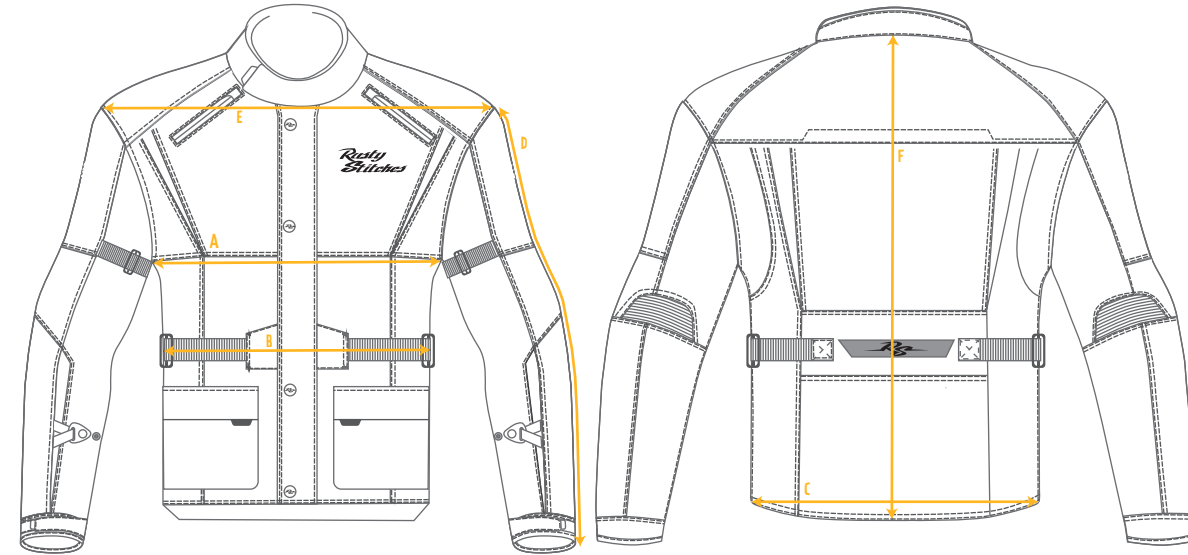


How to choose your Jacket size



Tommy Jack											
	S	M	L	XL	XXL	3XL	4XL	5XL	6XL	7XL	
A 1/2 Chest	59	61	63	65	67	69	71	73	75	77	
B 1/2 Waist	54,5	56,5	58,5	60,5	62,5	64,5	66,5	68,5	70,5	72,5	
C 1/2 Bottom	56	58	60	62	64	66	68	70	72	74	
D Sleeve length	68	69	70	71	72	73	74	75	76	77	
E Shoulder	51	52	53	54	55	56	57	58	59	60	
F Center Back	75	76	77	78	79	80	81	82	83	84	



To determine your jacket size, please use a measuring tape. You can measure a good fitting jacket that you own, please compare those measurements with the size chart on the left and pick your size. If you are between two sizes, pick the largest size.